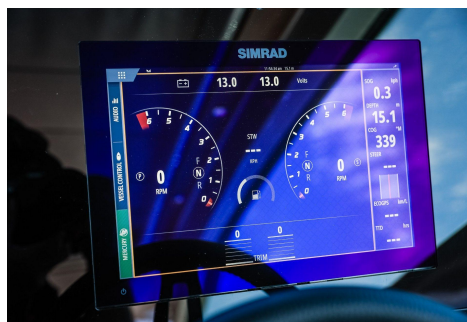




## FLIPPER 900 ST

\$ 388,500



### Disclaimer

Our company offers the details of this vessel in good faith but cannot guarantee or warrant the accuracy of this information nor warrant the condition of the vessel. A buyer should instruct his agents and/or surveyors to investigate such details buyer desires validated. This vessel is offered subject to prior sale, price change or withdrawal without notice.

## Specifications

### Boat Details

Price	\$ 388,500	Boat Brand	Flipper Boats
Model	900 Sport Top	Length	9.02
Year	2023	Category	Cruising Boats
Hull Style	Single	Hull Type	GRP
Power Type	Power	Stock Number	900ST 2023 STK
Condition	Used	State	New South Wales
Suburb	ROZELLE	Engine Make	MERCURY

### Description

FLIPPER 900 ST - \$ 388,500

FLIPPER 900 ST is a luxurious day cruiser that combines style, comfort, and performance to deliver an unrivalled boating experience. POWERED BY TWIN 225 HP MERCURY V6 DTS COLD FUSION WHITE OUTBOARDS, this Finnish-built vessel stands out with its sleek design, spacious layout, and meticulous attention to detail, making it an exceptional choice for boating enthusiasts seeking the ultimate in luxury and practicality.

Measuring 9.00 metres in length, the FLIPPER 900 ST comfortably accommodates up to twelve passengers. The twin Mercury 225 HP outboard engines ensure excellent performance, allowing for smooth navigation and responsiveness on the water. The well-appointed helm provides easy access to controls, while the spacious main cabin features a fully equipped galley, ensuring convenience during outings. The large aft deck is perfect for entertaining, featuring a sunbed and an alfresco dining area that invites relaxation and socialising.

In summary, the FLIPPER 900 ST is a stunning day cruiser that expertly blends luxury, performance, and functionality. For those seeking a vessel that embodies style and delivers unforgettable experiences on the water, the FLIPPER 900 ST is a top contender that should not be overlooked. This model includes all standard features, ensuring you have everything you need for a memorable day on the water.

#### FITTED OPTIONS:

- SIMRAD GLASS BRIDGE 12"
- TRIM TABS
- MERCURY ACTIVE TRIM DTS WITH PAD
- 1ST MATE MARINE SAFETY
- LEWMAR ANCHOR WINCH BOW + ANCHOR 10 KG + CHAIN
- BOW THRUSTER
- UNDERWATER LIGHTS
- SHORE POWER BASIC, 25 AH + SOCKETS
- SHOWER ON SWIM PLATFORM
- RADIO/BLEETOOTH, BLACK BOX, 4 LOUDSPEAKERS
- WARM WATER SYSTEM, 16 L (REQUIRES SHORE POWER)
- EXTRA BATTERY
- SUNDECK CUSHIONS, BOW
- MASSIVE TEAK FOR COCKPIT & DECKS

#### Disclaimer

Our company offers the details of this vessel in good faith but cannot guarantee or warrant the accuracy of this information nor warrant the condition of the vessel. A buyer should instruct his agents and/or surveyors to investigate such details buyer desires validated. This vessel is offered subject to prior sale, price change or withdrawal without notice.

- EXTRA DRAWER FRIDGE, 30 L

THE PACKAGE INCLUDES PROFESSIONAL ON-WATER TRAINING AND FAMILIARIZATION, NSW REGISTRATIONS AND ENCLOSED WATERS SAFETY EQUIPMENT, AND DOCKING EQUIPMENT INCLUDING ROPES AND FENDERS.

CMG at Sydney Boathouse, 2/2 Waterways Court, Sydney, our friendly staff will be pleased to help with your specific requirements.

We can arrange Mercury finance, Mercury insurance, and transport/shipping directly to you.

Our Brands include Sea Ray, Beneteau, Bella, Falcon, Flipper, Cobia, and Mercury and cover a range of styles including Bowriders, Deck boats, Ski and Wakeboard boats, Runabouts, Centre Consoles, Tenders, Skiffs, Dual Console, Walk-around, Cuddy Cabin, Half Cabin, Cabin boats, Express Cruisers, Sports Cruisers, High-performance power boats, and Luxury Motor yachts.

\* Some images may be samples only and may show factory options/upgrades/hull colours not included in the standard package.

## Features

Designer	Thorup Design
Builder	BELLA VENEET
Water (Potable) Capacity (l)	100
Hull Construction Material	GRP
Hull Type	Mono
Length (m)	9.02
Beam/Width (m)	3.15
Draft (m)	0.70
Drive Type	OUTBOARD
Fuel Type	Petrol
Fuel Tank Capacity (L)	380
Number of Berths	4 + 2
Passenger capacity	10

## Engine Details 1

Engine Make	MERCURY
Displacement	3400
Horse Power	225
Fuel Type	Petrol
Drive Type	Outboard
Steering	Power Assisted
Fuel Capacity	380
Propeller	Stainless Steel

### Disclaimer

Our company offers the details of this vessel in good faith but cannot guarantee or warrant the accuracy of this information nor warrant the condition of the vessel. A buyer should instruct his agents and/or surveyors to investigate such details buyer desires validated. This vessel is offered subject to prior sale, price change or withdrawal without notice.

---

## Engine Details 2

Engine Make	MERCURY
Displacement	3400
Horse Power	225
Fuel Type	Petrol
Drive Type	Outboard
Steering	Power Assisted
Propeller	Stainless Steel

---

### Disclaimer

Our company offers the details of this vessel in good faith but cannot guarantee or warrant the accuracy of this information nor warrant the condition of the vessel. A buyer should instruct his agents and/or surveyors to investigate such details buyer desires validated. This vessel is offered subject to prior sale, price change or withdrawal without notice.